

CYCLONE DUST COLLECTOR *Ray Foster*

Model CDC1

Operating and Maintenance Instructions



**Sales, Service, and Technical Assistance
Call Toll Free 800 / 654-4519**

Ray Foster

Ray Foster Dental Equipment
5421 Commercial Drive
Huntington Beach, CA 92649
714 / 897-7795, Fax 714 / 898 – 6013

The *Ray Foster Cyclone Dust Collector* was engineered for optimum suction at a low noise level, easy and economical filter changes, and minimal maintenance.

It is designed for various grinding tasks in the dental laboratory, and is intended to be used in conjunction with bench lathes, high speed alloy grinders, micro motors, hand pieces, and other grinding tools.

IMPORTANT SAFETY INSTRUCTIONS

To reduce the risk of fire, electrical shock, injury to persons or damage when using your Cyclone Dust Collector, follow basic safety precautions including the following:

- ✓ **Read** this manual before using your dust collector.
- ✓ **Ground the dust collector.** This unit is equipped with an approved three conductor cord and plug. It must be plugged into a three hole grounded receptacle.
- ✓ **Disconnect** the power cord before servicing or cleaning unit.
- ✓ **Use with dry materials only.** Do not use dust collector with any wet or moist material, such as gypsum models that have not thoroughly dried. Moisture will cause rapid wear of the motor, and the possibility of electrical short or electrical shock.
- ✓ **Do not** operate unit without primary and secondary filters in place.
- ✓ **Do not** operate unit with a damaged or punctured filter bag.
- ✓ **Do not** block the discharge vents. The dust collector discharges filtered air through vents on the right side of the unit. Allow at least four inches of clearance on this side for air discharge.

INSTALLATION

1. Choose a suitable location for the unit. It is compact and portable and fits easily under a counter or bench. If you choose to place it inside a cabinet, be sure to provide adequate ventilation for the exhaust. The unit discharges air out the right side, DO NOT BLOCK this discharge in any way.
2. One 6 foot long by 2.5 inch diameter vacuum hose is supplied. Longer lengths are available if required. Also available is a 1.5 inch diameter vacuum hose for applications that require the smaller diameter hose. Insert one end of the hose into the open port on top of the dust collector, and the other end connects to the work station or dust collection devise.

3. Plug the unit into any standard GROUNDED electrical outlet. DO NOT circumvent the electrical grounding by removing the third prong. The dust collector is turned on (international symbol "I") and off (international symbol "O") by a rocker switch located on the front panel. The unit can also be controlled by an optional foot switch (P/N X131) or remote control box (P/N X145).

MAINTENANCE

1. **Disposable Paper Filter Bag** (item X150, pkg/10)
The primary filter is a disposable paper filter bag. The unit comes equipped with one paper filter installed, and four (4) replacement filters. To install a new filter:
 - A. Unlatch and remove the lid of the dust collector.
 - B. Remove the old paper filter. The filter is held in place with an elastic band sewn onto the top of the bag.
 - C. Insert the bottom of the new dust bag into the cloth bag, and expand the elastic band around and over the top of the cloth bag. Loosely open the paper bag to conform to the inside of the cloth bag.
 - D. Replace both filter bags into the filter compartment of the dust collector. Replace and latch the lid.

*IMPORTANT: The disposable bag should be changed when there is a noticeable reduction in suction power. **Never** empty and reuse the paper bag.*

2. **Cloth Dust Bag** (item X112).
The cloth dust bag is a semi-permanent filter, and requires removal and shaking periodically to prevent its pores from becoming clogged resulting in reduced suction.

CAUTION: Never operate the dust collector with any filter missing or damaged, as this could cause rapid wear and damage to the motor.

3. **Motor Brushes** (Item X172 for GS brand motor, Set of 2).
The average life of the motor brushes is 500 hrs. The motor brushes are replaceable and easily accessible by removing the bottom of the unit. It is not necessary to remove the motor from the dust collector.

WARNING: *Unplug the dust collector from the electrical socket before removing the bottom plate.*

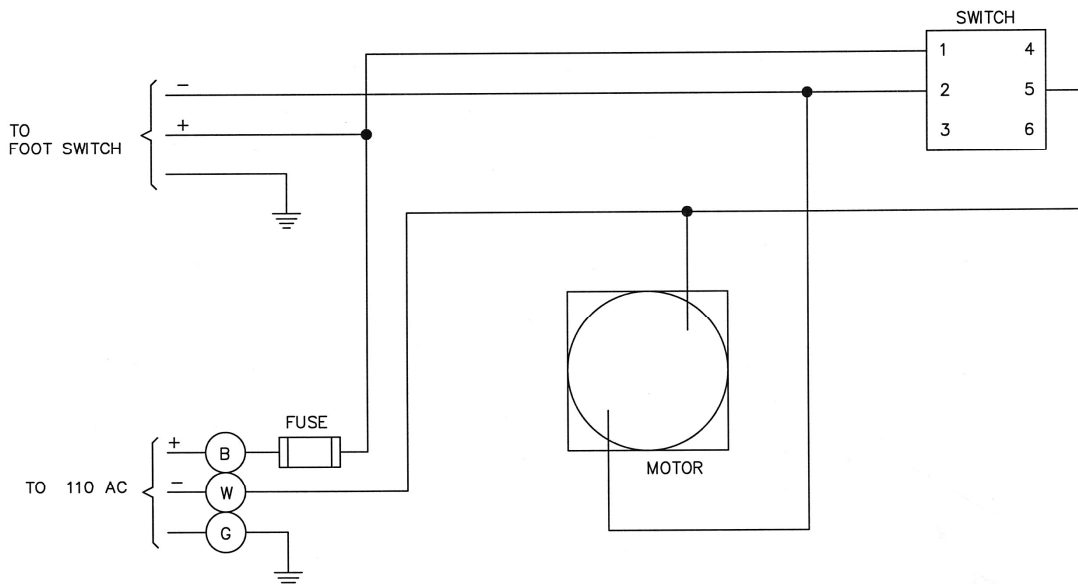
The brushes are secured to the motor with a small gauge spring wire that applies pressure to the end of the carbon brush. Move the spring wire out and away from the brush with a small screw driver or similar, and remove the brush wire from the quick-disconnect terminal. The old brush can then be removed from the motor.

ELECTRIC WIRING DIAGRAM

Your Foster Cyclone Dust Collector has been wired in accordance with prevailing engineering and safety codes as of the date of manufacture. The wiring diagram appearing below is a typical wiring diagram.

Should it become necessary to make repairs or replace any of the parts in the electrical system, it is recommended that this diagram be consulted and observed in reconnection of electrical components, and that color coding of existing wires be preserved.

Uses only Foster approved replacement parts, or their equivalent; do not circumvent established electrical safeguards. **Disconnect** unit from electrical outlet **before** attempting any repairs.



Vacuum - Schematic

REPLACEMENT PARTS AND HOSES

Item	Description
X150	Disposable Paper Dust Bags, Pkg 10
X112	Cloth Dust Bag
X125	2 1/2" ID X 6 Ft Hose with Hose Ends
X158	1 1/2" ID X 6 Ft Hose with Hose Ends
X151	Hose End Adapter for 3" ID Hose
X175	Motor Brushes
X115	Replacement Motor for Model CDC1
X166	Fuse, 10 Amp

ACCESSORIES FOR DUST COLLECTOR

Item	Description
X131	Foot Switch
X145	Variable Speed/On/Off Remote Control
X148	Air Scoop (Fish Mouth)
X152	Mobil Cart
X210LS	Splash Hood W/Flange, Light, Shield
X168	Power Outlet Adapter for Alloy Grinder

Warranty

Ray Foster Dental Equipment warrants Foster Cyclone Dust Collectors to be free of defects in material and workmanship for a period of one year from the date of purchase by the original user.

We do **not** guaranty that the motor brushes and filter bags will last one year, as these are items that wear and must be replaced when needed.

To obtain warranty service, the Dust Collector or defective part, together with proof of date of purchase, must be delivered freight prepaid to the factory in Huntington Beach, California. At its option, Ray Foster Dental Equipment Company will replace or repair the defect free of charge, providing the Dust Collector has not been subjected to abuse, neglect, damage, or used in a capacity other than which was intended.

Ray Foster

5421 Commercial Drive
 Huntington Beach, CA 92649 USA
 714 / 897-7795 or 800 / 654-519
 FAX 714 / 898-6013
www.fosterdental.com